



POLIMASTER®
Radiation Detection Technologies



**SMART
PROBE**

PoliProbe™ G1

PoliProbe G1 smart probe is equipped with an energy-compensated Geiger-Mueller tube for extended measurement of the **ambient dose equivalent** and **ambient dose equivalent rate**.

The probe is **designed for integration** with external processing units to either add radiation monitoring capabilities to third-party systems or extend the detection range of built-in gamma detectors. Probe readings can be monitored in real time via an external processing through RS-485 connection or a PC through USB.

The instrument provides audible and visual alarms when preset dose or dose rate thresholds are exceeded, ensuring timely user notification. Its IP65-rated enclosure and wide operating temperature range ensure reliable performance in harsh environmental conditions.

PoliProbe G1 comes with user software, that allows to monitor its operations in real-time and adjust the dose and dose rate thresholds.

Applications

- Third-party system integration
- HAZMAT and CBRNe teams
- Steel and recycling industry
- Waste management sites
- Counter-terrorism teams
- Homeland security
- Area monitoring
- First responders
- Special forces

Features

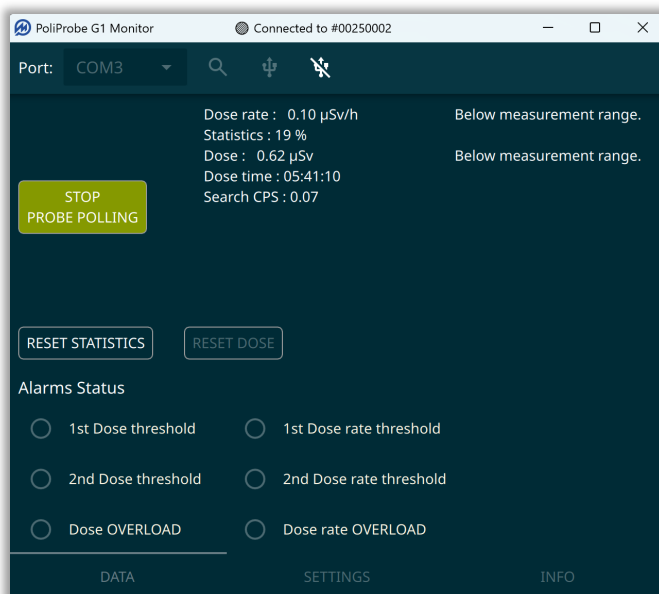
- Compliance with essential requirements of IEC 60846-1:2009
- Ambient dose equivalent rate up to 10 Sv/h
- Ambient dose equivalent up to 10 Sv
- Operating temperature from -20 °C to 50 °C
- Audible and visual alarms
- USB communication with PC



www.polimaster.com

SPECIFICATIONS

Detector	Geiger-Mueller tube	
Dose rate measurement range	1 µSv/h to 10 Sv/h	
Dose rate linearity	-15 % to +22 %	
Accuracy (Ref. ¹³⁷Cs)	±6 % at 300 µSv/h	
Dose measurement range	10 µSv to 10 Sv	
Variation of relative response of dose	-15 % to +22 %	
Variation of relative response of dose due to dose rate variation	-13 % to +18 %	
Accuracy (Ref. ¹³⁷Cs)	±6 % at 300 µSv	
Energy range	30 keV to 3 MeV (protective cap must be removed for measurements <48 keV)	
Combined energy and angular response (Ref. ¹³⁷Cs)	-29 % to +67 % (48 keV to 1.25 MeV; 0° to ±45°)	
Alarms	visual (LED) and audible	Dimensions 162 mm × Ø 40 mm
Communication	USB, RS-485	Weight 110 g
Power supply	3.6 – 16 VDC (supports Li-ion battery, USB 5 V, or 12 V DC external supply)	Operating conditions
Ingress protection	IP65	- ambient temperature -20 °C to 65 °C - atmospheric pressure 70 kPa to 106.7 kPa - relative humidity up to 95 % at 35 °C



PoliProbe G1 User Software
for monitoring readings in real-time on a computer
and adjusting probe settings



**Two alarm LEDs and
audible alarm speaker**

Polimaster Inc.
45645 Willowpond Plaza,
Suite 100, Sterling, VA,
20164, USA
phone: +1 703 525 5075
fax: +1 703 525 5079
info@polimaster.us

Polimaster Europe UAB
Ezero str. 4, Didziasalio k.,
Nemezio sen., LT-13264,
Vilnius district, Lithuania
phone: +370 5 210 2323
fax: +370 5 210 2324
info@polimaster.com

Polimaster Japan Co., Ltd.
AUBE2 5-177 Kuratsuki,
Kanazawa, Ishikawa Prefecture
920-8203 Japan
phone: + 81 076 201 8623
fax: + 81 076 201 8624
pacific@polimaster.jp